

# Metropolitan Transportation Improvement Program



**FY 2013 -  
FY 2017**



**CYMPO**

**Central Yavapai Metropolitan  
Planning Organization**

**Christopher Bridges**

Administrator

1971 Commerce Center Circle Suite E  
Prescott, AZ 86301

Phone: 928-442-5730

Email: [Christopher.Bridges@co.yavapai.az.us](mailto:Christopher.Bridges@co.yavapai.az.us)

Web: [www.cympo.com](http://www.cympo.com)



**Metropolitan Transportation Improvement Program**  
**FY 2013 through FY 2017**

1971 Commerce Center Circle Suite E  
Prescott, AZ 86301

Phone: 928-442-5730

Web: <http://www.cympo.com>



## **Central Yavapai Metropolitan Planning Organization**

### **Executive Board**

Patty Lasker - Chairwoman  
Town of Prescott Valley – Vice Mayor

Darryl Croft - Vice-Chairman  
Town of Chino Valley – Councilman

Chris Kukyno - Secretary/Treasurer  
City of Prescott - Councilman

Carol Springer - Member  
Yavapai County Supervisor

William (Bill) J. Feldmeier - Member  
AZ State Transportation Board

Mark McBrady - Member  
Town of Dewey-Humboldt – Vice Mayor

## Table of Contents

Chapter 1	Introduction Mission Vision Regional Profile Quick Stats Funding and Budget
Chapter 2	TIP Process and Public Involvement Schedule Project Submittal Fiscal Constraint Technical Committee Review Public Review and Public Comment Period Final Approval
Chapter 3	Transit Projects Chino Valley Transit
Tables	Table 1 – State and Federal Funded Projects Table 2 – Operations and Maintenance Table 3 – Transit Projects Table 4 – Locally Funded Projects Table 5 – STP Historic and Future Projects Table 6 – Acronym and TIP ID Key



## **CHAPTER 1**

### **Introduction**

The Central Yavapai Metropolitan Planning Organization (CYMPO) is the designated Metropolitan Planning Organization (MPO) for the City of Prescott, Town of Prescott Valley, Town of Chino Valley, Town of Dewey-Humboldt, Yavapai County and Arizona Department of Transportation. As the regional MPO, CYMPO provides the forum for local elected officials and transportation experts to plan multi-modal infrastructure within the CYMPO Planning Boundary area.

The CYMPO Executive Board provides for an inclusive, deliberative process that considers the needs, financial resources and perspectives of all stakeholders. The Board structure also creates a regional forum for single jurisdictions to come together and work toward common goals.

CYMPO committees include, but are not limited to: Multi-Modal Technical Advisory Committee, which provide technical and advisory support to the Executive Board and consist of representatives from each CYMPO member entity.

#### **MISSION**

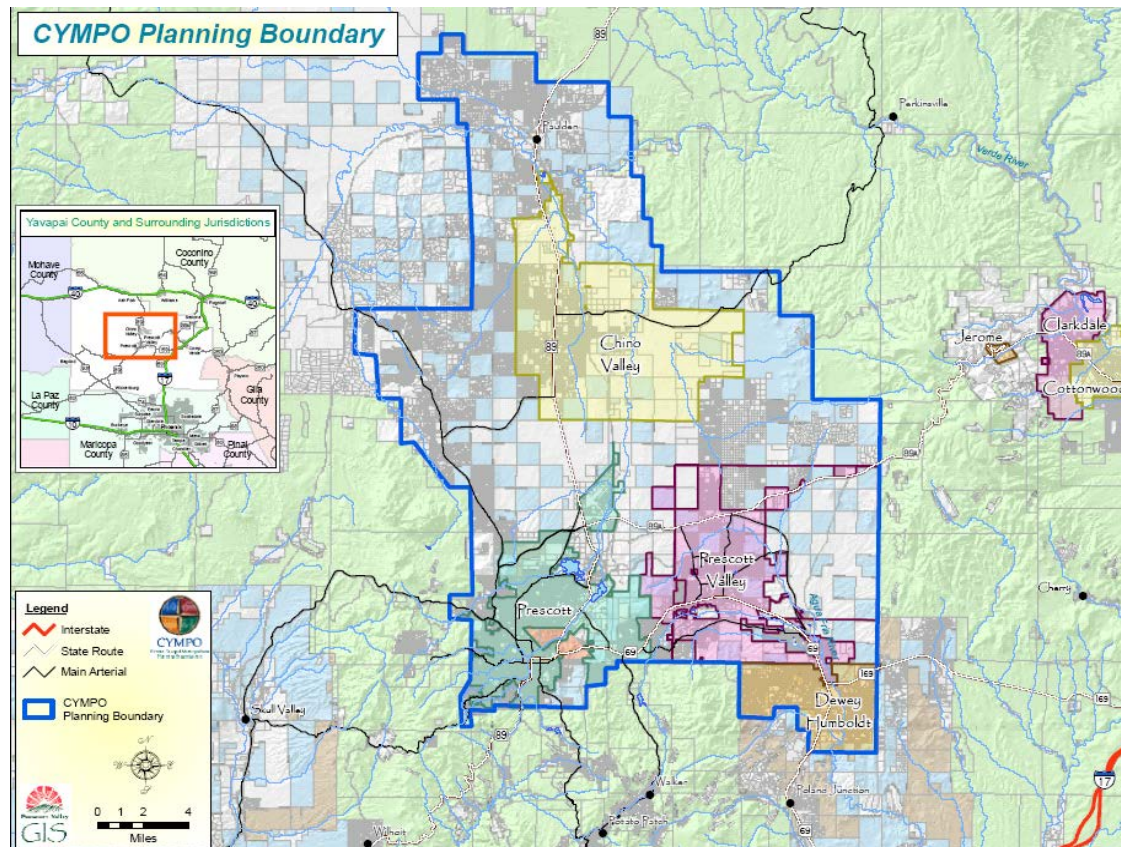
The mission of Central Yavapai Metropolitan Planning Organization (CYMPO) is to provide leadership in planning and promoting a comprehensive multi-modal transportation system that will provide for regional mobility and connectivity that encourages a positive investment climate and fosters development sensitive to the environment.

#### **VISION**

The Central Yavapai Metropolitan Planning Organization (CYMPO) envisions planning and implementing a regional, integrated multi-modal transportation system that safely and efficiently allows the movement of people, goods and services to, through, and within the CYMPO Planning Boundary area.

## REGIONAL PROFILE

The Prescott Urbanized Area is located in central Arizona in the central basin area of Yavapai County. Yavapai County totals approximately 8,125 square miles, which is about the same size as the State of New Jersey and is much larger than each of the states of Connecticut, Delaware, and Rhode Island. Of the 8,125 square miles in Yavapai County approximately 401 square miles are encompassed within the CYMPO planning boundary.





Yavapai County has seen a significant increase in population since 1970 with an average annual growth rate of 11.75% since that time. The County's population has grown from a total of 37,005 in 1970 to 167,517 people according to the 2000 US Census.

This population growth has continued by expanding to the 2010 US Census total of 211,033 people in Yavapai County. This substantial growth is expected to continue in the long term as development pressures approach from the Phoenix metropolitan area and as the overall popularity of the Prescott region continues to increase. Additionally, the central location of the Prescott region within the State of Arizona, the amount of vacant private land, and the moderate climate, makes Yavapai County a desirable place to live, work, and retire.

## **QUICK STATS**

### **2000 Census**

- CYMPO Planning Boundary population - 91,000
  - Prescott 33,938
  - Prescott Valley 23,535
  - Chino 7,835
  - Yavapai County 25,692

### **2010 Census**

- CYMPO Planning Boundary population – 122,715
  - Prescott 39,843
  - Prescott Valley 38,822
  - Chino Valley 10,817
  - Yavapai County 29,339
  - Dewey-Humboldt 3,894



## **FUNDING AND BUDGET SUMMARY**

CYMPO, as well as any other MPO in the country, is dependent on federal funding for operation of the MPO and to perform planning activities that is used to deliver a variety of projects for the region. Even though the amount of funding that CYMPO receives is relatively small when compared to the big picture of funding across the country, our region has been extremely successful utilizing the funding we do receive and leveraging it to deliver much needed projects for our community. Below is a detail of the types of funding CYMPO receives and what each funding type is used for.

### **Metropolitan Planning Funds (PL) and Statewide Planning and Research Funds (SPR)**

The Arizona Department of Transportation (ADOT) is the designated recipient of the Federal-aid Highway funds used for planning and research purposes. ADOT receives Statewide Planning and Research funds (SPR) from FHWA and utilizes some of these funds with planning agencies to conduct transportation planning activities. Metropolitan Planning funds (PL) are apportioned to states on the basis of population in urbanized areas and relative to the amount of highway construction funds the state receives. ADOT maintains multi-year contracts with planning agencies to conduct transportation related planning activities within their region. These multi-year contracts utilize the PL and SPR funds received from FHWA.

SPR funds are discretionary and are typically administered by the state to carry out specific technical activities. Within the Central Yavapai region SPR funds will be used to conduct transportation planning activities and administer the program. SPR funds require a 20% local match and PL funds require a 5.7% local match, which in the case of this region is provided by the local governments.

Total Estimated PL Funding Annually	<b>\$ 118,000</b>
Total Estimated SPR Funding Annually	<b>\$ 125,000</b>

### **Surface Transportation Program Funds (STP)**

STP is a federal-aid highway flexible funding program that funds a broad range of surface transportation capital needs including roads, transit, airport access, vanpool, and bicycle and pedestrian facilities. Transit related planning, research, and development activities are also eligible uses of STP funds. CYMPO programs STP funds for primarily construction projects and has delivered every project that has been programmed with this type of funding since the inception of CYMPO.



Total Estimated STP Funding Annually	\$ 633,000
--------------------------------------	------------

### Highway Safety Improvement Program (HSIP)

The specific purpose of the HSIP is to achieve a significant reduction in traffic fatalities and serious injuries on public roads. This is to be accomplished through the development and implementation of Strategic Highway Safety Plan (SHSP) which is statewide-coordinated safety plan that provides a comprehensive framework for reducing highway fatalities and serious injuries on all public roads.

The CYMPO region has established a plan to utilize these funds for a regional sign and striping program. The proposed scope of the project consists of replacing and installing regulatory, warning, street name, object marker, and roadside delineator signs. It also involves the replacement of existing posts with new ADOT standard crash worthy square tube posts. This will be a systematic annual approach to replace all signs to meet federal standards for retro-reflectivity. It is also anticipated that all procurement and installation work will be completed by a contractor under one regional contract. This would give the region greater buying power and be more efficient than multiple contracts. This is 100% funding.

Total Estimated HSIP Funding Annually	\$ 600,000
---------------------------------------	------------

### Federal Transit Administration Funding (Section 5303)

Section 5303 transit funds will be used for transit planning purposes in the Central Yavapai region. Use of Section 5303 funds is allowed for planning and technical studies related to transit. They are filtered down from the Federal Transit Administration (FTA) through ADOT to the regional planning agencies within the State. These funds require a 20% local match.

Total Estimated 5303 Funding Annually	\$ 33,721
---------------------------------------	-----------

## CHAPTER 2

### **MTIP Process and Public Involvement**

The Central Yavapai Metropolitan Planning Organization (CYMPO) updates the MTIP on a regular basis and in doing so strives to include as much public input as possible. Annually the CYMPO local jurisdictions: Yavapai County, City of Prescott, Town of Prescott Valley, Town of Chino Valley, Town of Dewey-Humboldt, ADOT Prescott District and Yavapai Prescott Indian Tribe; submit projects for inclusion into the MTIP. These projects are reviewed in a public meeting by the Multi-modal Technical Advisory Committee (M-TAC). Each project to be considered for the MTIP is required to be fiscally constrained. The M-TAC reviews the proposed projects, prioritizes and makes their recommendation based on the following criteria:

- Safety
- Number of users
- Congestion benefits
- Regional significance
- System continuity

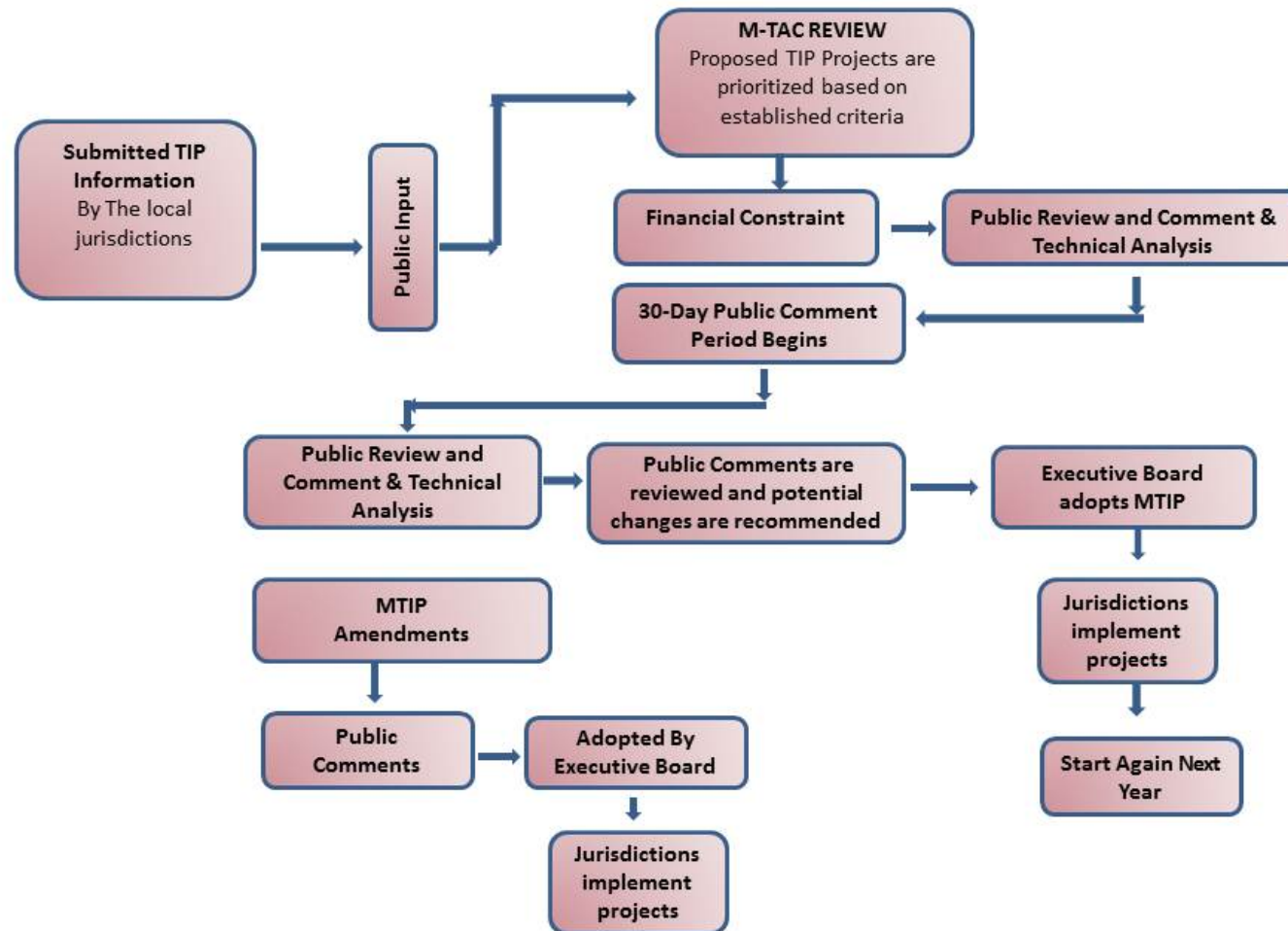
CYMPO staff then makes any requested changes by the M-TAC; again, reviewed by the committee in a public meeting. The draft MTIP document is then approved for a 30 day public comment period after review by the Executive Board in a public meeting. This draft document is made available on the CYMPO web site, as well as at the City of Prescott, Town of Prescott Valley, Town of Chino Valley, Town of Dewey-Humboldt and the CYMPO office.

Following the 30 day comment period the technical advisory committee reviews and addresses any public comments received. Once all comments and potential changes are addressed the draft MTIP is forwarded to the Executive Board for final approval.

CYMPO and the member jurisdictions follow the adopted and ADOT approved Title VI plan to help ensure the greatest amount of public participation possible during the MTIP development and public involvement process.

Amendments to the MTIP throughout the fiscal year are processed in the same manner, excluding the 30-day comment period.

**METROPOLITAN TRANSPORTATION IMPROVEMENT PROGRAM (MTIP)  
FISCAL YEAR 2013 - 2017**



## **CHAPTER 3**

### **Transit Projects**

In 2009 a group of community stakeholders, with funding assistance from the Central Yavapai Metropolitan Planning Organization (CYMPO), began a review to determine the feasibility of providing public transit to the general public in the Town of Chino Valley. The study focused on assessing key factors impacting potential transit service including:

- Community characteristics including demographic and socio-economic, travel patterns, land use, and roadway patterns;
- Potential service options;
- System requirements including capacity to operate service, capital and financial requirements;
- Implementation Plan

The study report was presented at a public meeting in December 2009 and based on favorable comments the Chino Valley Town Council approved the program in January 2010. Chino Valley Staff was directed to submit an application to the ADOT administered grant program funding general public transportation in rural communities. The FTA Section 5311 provides funding for operations, administration, and capital expenditures to support transit services in rural areas. Funds were made available for the Federal Fiscal Year October 1, 2010 to September 30, 2011. An application for the second year of operations was also submitted in January 2011.

The Chino Valley Transit system is currently the only federally funded public transit program in the CYMPO area. However, CYMPO staff is planning on utilizing FTA Section 5303 funds for coordinated planning with the local human service providers during the next year.

## **TABLES**

Table 1 – State and Federal Funded Projects

Table 2 – Operations and Maintenance

Table 3 – Transit Projects

Table 4 – Locally Funded Projects

Table 5 – STP Historic and Future Projects

Table 6 – HSIP Historic and Future Projects

## Central Yavapai Metropolitan Planning Organization 2013 - 2017 MTIP

### Federal and State Funded Projects (FY Funding Amount listed in 1,000's)

<b>TIP ID:</b> CY-PRV-12-01		<b>County:</b> Yavapai	<b>Project Type:</b> Transportation Enhancement				
<b>Location and Sponsor:</b> Prescott Valley / Town of Prescott Valley		<b>Project Name:</b> PV Pipeline Phase 1					
<b>Description:</b> Construct Multi-Use Path Lakeshore Dr. to Manley							
<b>Mile Length:</b> 5800 LF							
<b>Phase</b>	<b>Funding Source</b>	<b>Total Project Cost</b>	<b>FY 2013</b>	<b>FY 2014</b>	<b>FY 2015</b>	<b>FY 2016</b>	<b>FY 2017</b>
PE	Local/HURF	\$529	\$ 29				
CON	TE		\$ 500				
<b>Total Programmed Funding</b>			\$ 529				
<b>TIP ID:</b> CY-PRV-12-02		<b>County:</b> Yavapai	<b>Project Type:</b> Transportation Enhancement				
<b>Location and Sponsor:</b> Prescott Valley / Town of Prescott Valley		<b>Project Name:</b> PV Pipeline Phase 2					
<b>Description:</b> Construct Multi-Use Path Manley to Long Mesa							
<b>Mile Length:</b> 4100 LF							
<b>Phase</b>	<b>Funding Source</b>	<b>Total Project Cost</b>	<b>FY 2013</b>	<b>FY 2014</b>	<b>FY 2015</b>	<b>FY 2016</b>	<b>FY 2017</b>
PE	Local/HURF	\$455	\$ 25				
CON	TE		\$ 430				
<b>Total Programmed Funding</b>			\$ 455				
<b>TIP ID:</b> CY-PRV-12-03		<b>County:</b> Yavapai	<b>Project Type:</b> Transportation Enhancement				
<b>Location and Sponsor:</b> Prescott Valley / Town of Prescott Valley		<b>Project Name:</b> PV Pipeline Phase 3					
<b>Description:</b> Construct Multi-Use Path Long Mesa to SR89A							
<b>Mile Length:</b> 4750 LF							
<b>Phase</b>	<b>Funding Source</b>	<b>Total Project Cost</b>	<b>FY 2013</b>	<b>FY 2014</b>	<b>FY 2015</b>	<b>FY 2016</b>	<b>FY 2017</b>
PE	Local/HURF	\$529	\$ 29				
CON	TE		\$ 500				
<b>Total Programmed Funding</b>			\$ 529				
<b>TIP ID:</b> CY-PRS-12-04		<b>County:</b> Yavapai	<b>Project Type:</b> Safe Routes to School				
<b>Location and Sponsor:</b> Prescott / Prescott Alternative Transportation		<b>Project Name:</b> Mile High & Mt. Oak Schools					
<b>Description:</b> Construct sidewalks & crosswalks							
<b>Mile Length:</b>							
<b>Phase</b>	<b>Funding Source</b>	<b>Total Project Cost</b>	<b>FY 2013</b>	<b>FY 2014</b>	<b>FY 2015</b>	<b>FY 2016</b>	<b>FY 2017</b>
CON	SRTS	\$234	\$ 234				
<b>Total Programmed Funding</b>			\$ 234				

## Central Yavapai Metropolitan Planning Organization 2013 - 2017 MTIP

### Federal and State Funded Projects (FY Funding Amount listed in 1,000's)

<b>TIP ID:</b> CY-YYV-12-05		<b>County:</b> Yavapai	<b>Project Type:</b> Highway Safety Improvement				
<b>Location and Sponsor:</b> Central Yavapai County / CYMPO			<b>Project Name:</b> Regional Sign & Post Replacement				
<b>Description:</b> Replace existing signs & posts for safety							
<b>Mile Length:</b>							
<b>Phase</b>	<b>Funding Source</b>	<b>Total Project Cost</b>	<b>FY 2013</b>	<b>FY 2014</b>	<b>FY 2015</b>	<b>FY 2016</b>	<b>FY 2017</b>
CON	HSIP	\$3,000	\$ 600	\$ 600	\$ 600	\$ 600	\$ 600
<b>Total Programmed Funding</b>			\$ 600	\$ 600	\$ 600	\$ 600	\$ 600
<b>TIP ID:</b> CY-PRS-12-06		<b>County:</b> Yavapai	<b>Project Type:</b> Transportation Enhancement				
<b>Location and Sponsor:</b> Prescott / ADOT			<b>Project Name:</b> SR89 White Spar Road Phase 1,2 &3				
<b>Description:</b> Construct bike lane & sidewalk Clubhouse Dr. to Copper Basin							
<b>Mile Length:</b> .44			<b>Lanes:</b>				
<b>Phase</b>	<b>Funding Source</b>	<b>Total Project Cost</b>	<b>FY 2013</b>	<b>FY 2014</b>	<b>FY 2015</b>	<b>FY 2016</b>	<b>FY 2017</b>
CON	TE	\$4,652	\$ 830				
CON	DM / ADOT STP		\$ 3,822				
<b>Total Programmed Funding</b>			\$ 4,652	\$ -	\$ -	\$ -	\$ -
<b>TIP ID:</b> CY-PRS-12-07		<b>County:</b> Yavapai	<b>Project Type:</b> Safe Routes to School				
<b>Location and Sponsor:</b> Prescott / Prescott Alternative Transportation			<b>Project Name:</b> Taylor Hicks/Miller Valley Schools				
<b>Description:</b> Construct sidewalks, signs & crosswalks							
<b>Mile Length:</b>			<b>Lanes:</b>				
<b>Phase</b>	<b>Funding Source</b>	<b>Total Project Cost</b>	<b>FY 2013</b>	<b>FY 2014</b>	<b>FY 2015</b>	<b>FY 2016</b>	<b>FY 2017</b>
CON	SRTS	\$238	\$ 238				
<b>Total Programmed Funding</b>			\$ 238	\$ -	\$ -	\$ -	\$ -

## Central Yavapai Metropolitan Planning Organization 2013 - 2017 MTIP

### Federal and State Funded Projects (FY Funding Amount listed in 1,000's)

<b>TIP ID:</b> CY-CHV-12-8		<b>County:</b> Yavapai	<b>Project Type:</b> Surface Transportation				
<b>Location and Sponsor:</b> Chino Valley / ADOT		<b>Project Name:</b> SR89/Perkinsville Road					
<b>Description:</b> Design/Construct Intersection Improvements							
<b>Mile Length:</b>			<b>Lanes:</b>				
<b>Phase</b>	<b>Funding Source</b>	<b>Total Project Cost</b>	<b>FY 2013</b>	<b>FY 2014</b>	<b>FY 2015</b>	<b>FY 2016</b>	<b>FY 2017</b>
CON	STP	\$1,266			\$ -	\$ 633	\$ 633
<b>Total Programmed Funding</b>			\$ -	\$ -	\$ -	\$ 633	\$ 633
<b>TIP ID:</b> CY-PRV-12-9		<b>County:</b> Yavapai	<b>Project Type:</b> Transportation Enhancement				
<b>Location and Sponsor:</b> Prescott Valley /Town of Prescott Valley		<b>Project Name:</b> Central Core Path Phase 3					
<b>Description:</b> Construct Multi-Use Path Navajo to Serpentine							
<b>Mile Length:</b> .76			<b>Lanes:</b>				
<b>Phase</b>	<b>Funding Source</b>	<b>Total Project Cost</b>	<b>FY 2013</b>	<b>FY 2014</b>	<b>FY 2015</b>	<b>FY 2016</b>	<b>FY 2017</b>
CON	TE	\$529	\$ 500				
CON	LM		\$ 29				
<b>Total Programmed Funding</b>			\$ 529	\$ -	\$ -	\$ -	\$ -
<b>TIP ID:</b> CY-PRS-12-10		<b>County:</b> Yavapai	<b>Project Type:</b> Transportation Enhancement				
<b>Location and Sponsor:</b> Prescott / City of Prescott		<b>Project Name:</b> Gurley Street Pedestrian Enhancements					
<b>Description:</b> Construct Sidewalks and Ramps							
<b>Mile Length:</b> 2250 FT			<b>Lanes:</b>				
<b>Phase</b>	<b>Funding Source</b>	<b>Total Project Cost</b>	<b>FY 2013</b>	<b>FY 2014</b>	<b>FY 2015</b>	<b>FY 2016</b>	<b>FY 2017</b>
CON	TE	\$419	\$ 395				
CON	LM		\$ 24				
<b>Total Programmed Funding</b>			\$ 419	\$ -	\$ -	\$ -	\$ -
<b>TIP ID:</b> CY-PRS-12-11		<b>County:</b> Yavapai	<b>Project Type:</b> Safe Routes to School				
<b>Location and Sponsor:</b> Prescott / Prescott Alternative Transportation		<b>Project Name:</b> Washington School					
<b>Description:</b> Construct Sidewalks and Crosswalks around the School							
<b>Mile Length:</b>			<b>Lanes:</b>				
<b>Phase</b>	<b>Funding Source</b>	<b>Total Project Cost</b>	<b>FY 2013</b>	<b>FY 2014</b>	<b>FY 2015</b>	<b>FY 2016</b>	<b>FY 2017</b>
CON	SRTS	\$191	\$ 191				
<b>Total Programmed Funding</b>			\$ 191	\$ -	\$ -	\$ -	\$ -



## Central Yavapai Metropolitan Planning Organization 2013 - 2017 MTIP

### Federal and State Funded Projects (FY Funding Amount listed in 1,000's)

<b>TIP ID:</b> CY-PRS-12-12		<b>County:</b> Yavapai	<b>Project Type:</b> Safe Routes to School				
<b>Location and Sponsor:</b> Prescott / Prescott Alternative Transportation			<b>Project Name:</b> Lincoln School				
<b>Description:</b> Construct Sidewalks and Crosswalks around the School							
<b>Mile Length:</b>			<b>Lanes:</b>				
<b>Phase</b>	<b>Funding Source</b>	<b>Total Project Cost</b>	<b>FY 2013</b>	<b>FY 2014</b>	<b>FY 2015</b>	<b>FY 2016</b>	<b>FY 2017</b>
CON	SRTS	\$286	\$ 286				
<b>Total Programmed Funding</b>			\$ 286	\$ -	\$ -	\$ -	\$ -
<b>TIP ID:</b> CY-YYV-12-13		<b>County:</b> Yavapai	<b>Project Type:</b> Surface Transportation				
<b>Location and Sponsor:</b> ADOT			<b>Project Name:</b> Deep Well Ranch Road - So. Chino Valley				
<b>Description:</b> Design and Construct 2 new lanes on SR 89 (89A to Chino Valley), the new Deep Well Ranch Rd							
<b>Mile Length:</b> MP 320.42 - MP 325.10			<b>Lanes:</b> 2 to 4 Lanes				
<b>Phase</b>	<b>Funding Source</b>	<b>Total Project Cost</b>	<b>FY 2013</b>	<b>FY 2014</b>	<b>FY 2015</b>	<b>FY 2016</b>	<b>FY 2017</b>
CON	STP	\$11,899	\$ 633	\$ 633	\$ 633		
CON	STP ADOT		\$ 10,000				
		TRAC#H803901C					
<b>Total Programmed Funding</b>			\$ 10,633	\$ 633	\$ 633	\$ -	\$ -
<b>TIP ID:</b> CY-PRV-12-14		<b>County:</b> Yavapai	<b>Project Type:</b> Safe Routes to School				
<b>Location and Sponsor:</b> Prescott Valley/Prescott Alternative Transportation			<b>Project Name:</b> SRTS Humboldt Schools Pilot				
<b>Description:</b> Non-Infrastructure							
<b>Mile Length:</b>			<b>Lanes:</b>				
<b>Phase</b>	<b>Funding Source</b>	<b>Total Project Cost</b>	<b>FY 2013</b>	<b>FY 2014</b>	<b>FY 2015</b>	<b>FY 2016</b>	<b>FY 2017</b>
Education	SRTS	\$28	\$ 28				
<b>Total Programmed Funding</b>			\$ 28	\$ -	\$ -	\$ -	\$ -
<b>TIP ID:</b> CY-PRS-12-15		<b>County:</b> Yavapai	<b>Project Type:</b> Safe Routes to School				
<b>Location and Sponsor:</b> Prescott/Prescott Alternative Transportation			<b>Project Name:</b> SRTS in Prescott				
<b>Description:</b> Non-Infrastructure							
<b>Mile Length:</b>			<b>Lanes:</b>				
<b>Phase</b>	<b>Funding Source</b>	<b>Total Project Cost</b>	<b>FY 2013</b>	<b>FY 2014</b>	<b>FY 2015</b>	<b>FY 2016</b>	<b>FY 2017</b>
Education	SRTS	\$112	\$ 112				
<b>Total Programmed Funding</b>			\$ 112	\$ -	\$ -	\$ -	\$ -

## Central Yavapai Metropolitan Planning Organization 2013 - 2017 MTIP

### Federal and State Funded Projects (FY Funding Amount listed in 1,000's)

<b>TIP ID:</b> CY-CHV-12-16		<b>County:</b> Yavapai	<b>Project Type:</b> HSIP				
<b>Location and Sponsor:</b> Chino Valley / ADOT		<b>Project Name:</b> SR89/Road 4 North					
<b>Description:</b> Design/Construct Intersection Improvements							
<b>Mile Length:</b>			<b>Lanes:</b>				
<b>Phase</b>	<b>Funding Source</b>	<b>Total Project Cost</b>	<b>FY 2013</b>	<b>FY 2014</b>	<b>FY 2015</b>	<b>FY 2016</b>	<b>FY 2017</b>
CON	HSIP	\$2,500		\$ -	\$ 2,500		
<b>Total Programmed Funding</b>			\$ -	\$ -	\$ 2,500	\$ -	\$ -
<b>TIP ID:</b> CY-YYV-12-17		<b>County:</b> Yavapai	<b>Project Type:</b> Surface Transportation				
<b>Location and Sponsor:</b> ADOT		<b>Project Name:</b> JCT SR 89A - Deep Well Ranch Rd					
<b>Description:</b> Design and Construct 2 new lanes on SR 89 - 89A to Deep Well Ranch Road							
<b>Mile Length:</b> MP 319.21 - MP 320.42			<b>Lanes:</b> 2 to 4 Lanes				
<b>Phase</b>	<b>Funding Source</b>	<b>Total Project Cost</b>	<b>FY 2013</b>	<b>FY 2014</b>	<b>FY 2015</b>	<b>FY 2016</b>	<b>FY 2017</b>
CON	STP ADOT	\$15,000				\$ 15,000	
		TRAC # H851801C					
<b>Total Programmed Funding</b>			\$ -	\$ -	\$ -	\$ 15,000	\$ -
<b>TIP ID:</b> CY-PRS-12-LP18		<b>County:</b> Yavapai	<b>Project Type:</b> Surface Transportation				
<b>Location and Sponsor:</b> Prescott / City of Prescott		<b>Project Name:</b> Government Canyon Bridge Replacement					
<b>Description:</b> Bridge Replacement							
<b>Mile Length:</b>			<b>Lanes:</b>				
<b>Phase</b>	<b>Funding Source</b>	<b>Total Project Cost</b>	<b>FY 2013</b>	<b>FY 2014</b>	<b>FY 2015</b>	<b>FY 2016</b>	<b>FY 2017</b>
Design	COP	\$1,325	\$ 75				
CON	FHWBRRP			\$ 1,250			
<b>Total Programmed Funding</b>			\$ 75	\$ 1,250	\$ -	\$ -	\$ -

Central Yavapai Metropolitan Planning Organization 2013 - 2017 MTIP							
Federal and State Funded Projects (FY Funding Amount listed in 1,000's)							
<b>TIP ID:</b> CY-YYV-12-LP19		<b>County:</b> Yavapai		<b>Project Type:</b> Surface Transportation			
<b>Location and Sponsor:</b> Central Yavapai County / ADOT				<b>Project Name:</b> Great Western Corridor			
<b>Description:</b> Design Concept Report							
<b>Mile Length:</b>							
<b>Phase</b>	<b>Funding Source</b>	<b>Total Project Cost</b>	<b>FY 2013</b>	<b>FY 2014</b>	<b>FY 2015</b>	<b>FY 2016</b>	<b>FY 2017</b>
Prelim Engineering	ADOT	\$633	\$ 633				
<b>Total Programmed Funding</b>			\$ 633	\$ -	\$ -	\$ -	\$ -
<b>GRAND TOTALS</b>			<b>\$20,143</b>	<b>\$2,483</b>	<b>\$3,733</b>	<b>\$16,233</b>	<b>\$1,233</b>

Table 1

## Central Yavapai Metropolitan Planning Organization 2013 - 2017 MTIP

### Anticipated Cost of Operations and Maintenance (FY Funding in \$1,000's)

<b>TIP ID:</b> CY-YYV-12-OM1		<b>County:</b> Yavapai	<b>Project Type:</b> Operations and Maintenance				
<b>Location and Sponsor:</b> Northwest of Prescott/ Yavapai County		<b>Project Name:</b> Williamson Valley Road					
<b>Description:</b> O&M Iron Springs Rd to Camp Wood Rd							
<b>Mile Length:</b> 17.5							
<b>Phase</b>	<b>Funding Source</b>		<b>FY 2013</b>	<b>FY 2014</b>	<b>FY 2015</b>	<b>FY 2016</b>	<b>FY 2017</b>
Maintenance	Local/HURF		\$ 66	\$ 66	\$ 66	\$ 66	\$ 66
<b>Total Programmed Funding</b>			\$ 66	\$ 66	\$ 66	\$ 66	\$ 66
<b>TIP ID:</b> CY-YYV-12-OM2		<b>County:</b> Yavapai	<b>Project Type:</b> Operations and Maintenance				
<b>Location and Sponsor:</b> Southeast of Prescott/ Yavapai County		<b>Project Name:</b> Senator Highway					
<b>Description:</b> O&M City of Prescott Limits to CYMPO Boundary							
<b>Mile Length:</b> 1.5							
<b>Phase</b>	<b>Funding Source</b>		<b>FY 2013</b>	<b>FY 2014</b>	<b>FY 2015</b>	<b>FY 2016</b>	<b>FY 2017</b>
Maintenance	Local/HURF		\$ 6	\$ 6	\$ 6	\$ 6	\$ 6
<b>Total Programmed Funding</b>			\$ 6	\$ 6	\$ 6	\$ 6	\$ 6
<b>TIP ID:</b> CY-YYV-12-OM3		<b>County:</b> Yavapai	<b>Project Type:</b> Operations and Maintenance				
<b>Location and Sponsor:</b> West of Prescott/ Yavapai County		<b>Project Name:</b> Iron Springs Road					
<b>Description:</b> O&M Williamson Valley Rd to Forest Boundary							
<b>Mile Length:</b> 17.5							
<b>Phase</b>	<b>Funding Source</b>		<b>FY 2013</b>	<b>FY 2014</b>	<b>FY 2015</b>	<b>FY 2016</b>	<b>FY 2017</b>
Maintenance	Local/HURF		\$ 9	\$ 9	\$ 9	\$ 9	\$ 9
<b>Total Programmed Funding</b>			\$ 9	\$ 9	\$ 9	\$ 9	\$ 9

## Central Yavapai Metropolitan Planning Organization 2013 - 2017 MTIP

### Transit Projects (FY Funding in \$1,000's)

<b>TIP ID:</b> CY-CHV-13-TR01		<b>County:</b> Yavapai	<b>Project Type:</b> Capital				
<b>Location and Sponsor:</b> Chino Valley/ Town of Chino Valley		<b>Project Name:</b> Chino Valley Transit					
<b>Description:</b> Purchase shelters and bus							
<b>Mile Length:</b> NA							
<b>Phase</b>	<b>Funding Source</b>		<b>FY 2013</b>	<b>FY 2014</b>	<b>FY 2015</b>	<b>FY 2016</b>	<b>FY 2017</b>
Capital	5311		\$ 76	\$ -	\$ -	\$ -	\$ -
Local			\$ 19				
<b>Total Programmed Funding</b>			\$ 95	\$ -	\$ -	\$ -	\$ -
<b>TIP ID:</b> CY-CHV-13-TR02		<b>County:</b> Yavapai	<b>Project Type:</b> Operations				
<b>Location and Sponsor:</b> Chino Valley/ Town of Chino Valley		<b>Project Name:</b> Chino Valley Transit					
<b>Description:</b> Demand response operations							
<b>Mile Length:</b> NA							
<b>Phase</b>	<b>Funding Source</b>		<b>FY 2013</b>	<b>FY 2014</b>	<b>FY 2015</b>	<b>FY 2016</b>	<b>FY 2017</b>
Operations	5311		\$ 45	\$ -	\$ -	\$ -	\$ -
Local			\$ 33				
Fare Revenues			\$ 5				
<b>Total Programmed Funding</b>			\$ 83	\$ -	\$ -	\$ -	\$ -
<b>TIP ID:</b> CY-CHV-13-TR03		<b>County:</b> Yavapai	<b>Project Type:</b> Administration				
<b>Location and Sponsor:</b> Chino Valley/ Town of Chino Valley		<b>Project Name:</b> Chino Valley Transit					
<b>Description:</b> Administration of transit system							
<b>Mile Length:</b> 17.5							
<b>Phase</b>	<b>Funding Source</b>		<b>FY 2013</b>	<b>FY 2014</b>	<b>FY 2015</b>	<b>FY 2016</b>	<b>FY 2017</b>
Administration	5311		\$ 20	\$ -	\$ -	\$ -	\$ -
Local			\$ 5				
<b>Total Programmed Funding</b>			\$ 25	\$ -	\$ -	\$ -	\$ -

## Central Yavapai Metropolitan Planning Organization 2013 - 2017 MTIP

### Local Funded Projects (FY Funding in \$1,000's)

<b>TIP ID:</b> CY-YYV-12-LP01		<b>County:</b> Yavapai	<b>Project Type:</b> Right-of-Way Acquisition				
<b>Location and Sponsor:</b> Central Yavapai County / Yavapai County		<b>Project Name:</b> Williamson Valley Rd					
<b>Description:</b> Right-of-Way Acquisition Pioneer Pkwy to Outer Loop Rd							
<b>Mile Length:</b>							
<b>Phase</b>	<b>Funding Source</b>	<b>Total Project Cost</b>	<b>FY 2013</b>	<b>FY 2014</b>	<b>FY 2015</b>	<b>FY 2016</b>	<b>FY 2017</b>
ROW	Local/HURF	\$2,590	\$ 605	\$ 1,285	\$ 700		
<b>Total Programmed Funding</b>			\$ 605	\$ 1,285	\$ 700	\$ -	
<b>TIP ID:</b> CY-PRS-12-LP02		<b>County:</b> Yavapai	<b>Project Type:</b> Surface Transportation				
<b>Location and Sponsor:</b> Prescott / City of Prescott		<b>Project Name:</b> Park Ave Reconstruction					
<b>Description:</b> Reconstruct Pavement between Gurley and Copper Basin							
<b>Mile Length:</b>							
<b>Phase</b>	<b>Funding Source</b>	<b>Total Project Cost</b>	<b>FY 2013</b>	<b>FY 2014</b>	<b>FY 2015</b>	<b>FY 2016</b>	<b>FY 2017</b>
CON	Local/HURF	\$2,457	\$ 2,457				
<b>Total Programmed Funding</b>			\$ 2,457	\$ -	\$ -	\$ -	
<b>TIP ID:</b> CY-PRS-12-LP03		<b>County:</b> Yavapai	<b>Project Type:</b> Surface Transportation				
<b>Location and Sponsor:</b> Prescott / City of Prescott		<b>Project Name:</b> Sundog Connector					
<b>Description:</b> Construct new alignment from Prescott Lakes Pkwy to Storm Ranch							
<b>Mile Length:</b>							
<b>Phase</b>	<b>Funding Source</b>	<b>Total Project Cost</b>	<b>FY 2013</b>	<b>FY 2014</b>	<b>FY 2015</b>	<b>FY 2016</b>	<b>FY 2017</b>
CON	Local/HURF	\$1,421	\$ -	\$ 1,421			
<b>Total Programmed Funding</b>			\$ -	\$ 1,421	\$ -	\$ -	\$ -
<b>TIP ID:</b> CY-PRS-12-LP04		<b>County:</b> Yavapai	<b>Project Type:</b> Surface Transportation				
<b>Location and Sponsor:</b> Prescott / City of Prescott		<b>Project Name:</b> Willow Lake Frontage Rd Reconstruction					
<b>Description:</b> Reconstruct Pavement between Marantha and Willow							
<b>Mile Length:</b>							
<b>Phase</b>	<b>Funding Source</b>	<b>Total Project Cost</b>	<b>FY 2013</b>	<b>FY 2014</b>	<b>FY 2015</b>	<b>FY 2016</b>	<b>FY 2017</b>
CON	Local/HURF	\$504		\$ 504			
<b>Total Programmed Funding</b>			\$ -	\$ 504	\$ -	\$ -	\$ -

## Central Yavapai Metropolitan Planning Organization 2013 - 2017 MTIP

### Local Funded Projects (FY Funding in \$1,000's)

<b>TIP ID:</b> CY-PRV-12-LP05		<b>County:</b> Yavapai	<b>Project Type:</b> Surface Transportation				
<b>Location and Sponsor:</b> Prescott Valley/ Town of Prescott Valley		<b>Project Name:</b> Viewpoint Dr Connector					
<b>Description:</b> Construct new alignment from Manley to Roundup							
<b>Mile Length:</b>							
<b>Phase</b>	<b>Funding Source</b>	<b>Total Project Cost</b>	<b>FY 2013</b>	<b>FY 2014</b>	<b>FY 2015</b>	<b>FY 2016</b>	<b>FY 2017</b>
CON	Local/HURF	\$4,000	\$ -	\$ 2,000	\$ 2,000		
			\$ -				
<b>Total Programmed Funding</b>			\$ -	\$ 2,000	\$ 2,000	\$ -	
<b>TIP ID:</b> CY-PRV-12-LP06		<b>County:</b> Yavapai	<b>Project Type:</b> Surface Transportation				
<b>Location and Sponsor:</b> Prescott Valley/ Town of Prescott Valley		<b>Project Name:</b> Navajo Dr Widening					
<b>Description:</b> Construct two new lanes between Superstition and Loos							
<b>Mile Length:</b>							
<b>Phase</b>	<b>Funding Source</b>	<b>Total Project Cost</b>	<b>FY 2013</b>	<b>FY 2014</b>	<b>FY 2015</b>	<b>FY 2016</b>	<b>FY 2017</b>
CON	Local/HURF	\$2,000	\$ -	\$ -	\$ -	\$ 2,000	
			\$ -				
<b>Total Programmed Funding</b>			\$ -	\$ -	\$ -	\$ 2,000	
<b>TIP ID:</b> CY-PRS-12-LP07		<b>County:</b> Yavapai	<b>Project Type:</b> Surface Transportation				
<b>Location and Sponsor:</b> Prescott / City of Prescott		<b>Project Name:</b> SR 89 - Side Road Connector Roundabout					
<b>Description:</b> Construct new roundabout at intersection							
<b>Mile Length:</b>							
<b>Phase</b>	<b>Funding Source</b>	<b>Total Project Cost</b>	<b>FY 2013</b>	<b>FY 2014</b>	<b>FY 2015</b>	<b>FY 2016</b>	<b>FY 2017</b>
CON	Local/HURF	\$1,128		\$ -	\$ 1,128		
<b>Total Programmed Funding</b>				\$ -	\$ 1,128		
<b>TIP ID:</b> CY-PRV-12-LP08		<b>County:</b> Yavapai	<b>Project Type:</b> Surface Transportation				
<b>Location and Sponsor:</b> Prescott Valley / Town of Prescott Valley		<b>Project Name:</b> Robert Rd Widening					
<b>Description:</b> Construct two additional lanes between Tranquil and Long Mesa							
<b>Mile Length:</b>							
<b>Phase</b>	<b>Funding Source</b>	<b>Total Project Cost</b>	<b>FY 2013</b>	<b>FY 2014</b>	<b>FY 2015</b>	<b>FY 2016</b>	<b>FY 2017</b>
CON	Local/HURF	\$2,300	\$ -		\$ -	\$ 300	\$ 2,000
			\$ -				
<b>Total Programmed Funding</b>			\$ -		\$ -	\$ 300	\$ 2,000

## Central Yavapai Metropolitan Planning Organization 2013 - 2017 MTIP

### Local Funded Projects (FY Funding in \$1,000's)

<b>TIP ID:</b> CY-PRS-12-LP09		<b>County:</b> Yavapai	<b>Project Type:</b> Surface Transportation				
<b>Location and Sponsor:</b> Prescott / City of Prescott		<b>Project Name:</b> Deep Well Ranch Road					
<b>Description:</b> Construct new roadway segment for alternate airport access connecting SR89 and Willow Creek							
<b>Mile Length:</b>							
<b>Phase</b>	<b>Funding Source</b>	<b>Total Project Cost</b>	<b>FY 2013</b>	<b>FY 2014</b>	<b>FY 2015</b>	<b>FY 2016</b>	<b>FY 2017</b>
CON	Local/HURF	\$1,500	\$ -		\$ -	\$ 1,500	
			\$ -				
<b>Total Programmed Funding</b>			\$ -	\$ -	\$ -	\$ 1,500	\$ -
<b>TIP ID:</b> CY-PRV-12-LP10		<b>County:</b> Yavapai	<b>Project Type:</b> Surface Transportation				
<b>Location and Sponsor:</b> Prescott Valley / Town of Prescott Valley		<b>Project Name:</b> Viewpoint Connector Intersection Improvements					
<b>Description:</b> Intersection widening improvements at Long Look & Spouse							
<b>Mile Length:</b> 1.1 Miles							
<b>Phase</b>	<b>Funding Source</b>	<b>Total Project Cost</b>	<b>FY 2013</b>	<b>FY 2014</b>	<b>FY 2015</b>	<b>FY 2016</b>	<b>FY 2017</b>
CON	Local/HURF	\$1,200	\$ 1,200		\$ -		\$ -
			\$ -				
<b>Total Programmed Funding</b>			\$ 1,200	\$ -	\$ -		\$ -
<b>TIP ID:</b> CY-PRV-12-LP11		<b>County:</b> Yavapai	<b>Project Type:</b> Surface Transportation				
<b>Location and Sponsor:</b> Prescott/City of Prescott		<b>Project Name:</b> Willow Creek Road Realigned					
<b>Description:</b> Realign Willow Creek Road between Pioneer Pkwy-Deep Well Ranch Road							
<b>Mile Length:</b>							
<b>Phase</b>	<b>Funding Source</b>	<b>Total Project Cost</b>	<b>FY 2013</b>	<b>FY 2014</b>	<b>FY 2015</b>	<b>FY 2016</b>	<b>FY 2017</b>
CON	ADOT/Local/ HURF/ TBD	\$3,950				\$ 3,950	
<b>Total Programmed Funding</b>			\$ -	\$ -	\$ -	\$ 3,950	\$ -



## Central Yavapai Metropolitan Planning Organization 2013 - 2017 MTIP

### Local Funded Projects (FY Funding in \$1,000's)

<b>TIP ID:</b> CY-PRS-12-LP12		<b>County:</b> Yavapai	<b>Project Type:</b> Surface Transportation				
<b>Location and Sponsor:</b> Prescott / City of Prescott		<b>Project Name:</b> Miller Valley Road					
<b>Description:</b> Mill/Overlay from Iron Springs to Hillside Rd.							
<b>Mile Length:</b>							
<b>Phase</b>	<b>Funding Source</b>	<b>Total Project Cost</b>	<b>FY 2013</b>	<b>FY 2014</b>	<b>FY 2015</b>	<b>FY 2016</b>	<b>FY 2017</b>
CON	Local/HURF	\$386	\$ 386				
<b>Total Programmed Funding</b>			\$ 386	\$ -	\$ -	\$ -	\$ -
<b>TIP ID:</b> CY-PRS-12-LP13		<b>County:</b> Yavapai	<b>Project Type:</b> Surface Transportation				
<b>Location and Sponsor:</b> Prescott / City of Prescott		<b>Project Name:</b> Gurley Street East					
<b>Description:</b> Mill/Overlay N. Marina to Bradshaw Drive							
<b>Mile Length:</b>							
<b>Phase</b>	<b>Funding Source</b>	<b>Total Project Cost</b>	<b>FY 2013</b>	<b>FY 2014</b>	<b>FY 2015</b>	<b>FY 2016</b>	<b>FY 2017</b>
CON	Local/HURF	\$536	\$ 536				
<b>Total Programmed Funding</b>			\$ 536	\$ -	\$ -	\$ -	\$ -
<b>TIP ID:</b> CY-PRS-12-LP14		<b>County:</b> Yavapai	<b>Project Type:</b> Surface Transportation				
<b>Location and Sponsor:</b> Prescott / City of Prescott		<b>Project Name:</b> Montezuma St. North					
<b>Description:</b> Mill/Overlay Sheldon St. to W. Goodwin St.							
<b>Mile Length:</b>							
<b>Phase</b>	<b>Funding Source</b>	<b>Total Project Cost</b>	<b>FY 2013</b>	<b>FY 2014</b>	<b>FY 2015</b>	<b>FY 2016</b>	<b>FY 2017</b>
CON	Local/HURF	\$507	\$ 507				
<b>Total Programmed Funding</b>			\$ 507	\$ -	\$ -	\$ -	\$ -
<b>TIP ID:</b> CY-PRS-12-LP15		<b>County:</b> Yavapai	<b>Project Type:</b> Surface Transportation				
<b>Location and Sponsor:</b> Prescott / City of Prescott		<b>Project Name:</b> Willow Creek Road					
<b>Description:</b> AR-ACFC Willow Creek Lake Rd. to Willow Creek Park							
<b>Mile Length:</b>							
<b>Phase</b>	<b>Funding Source</b>	<b>Total Project Cost</b>	<b>FY 2013</b>	<b>FY 2014</b>	<b>FY 2015</b>	<b>FY 2016</b>	<b>FY 2017</b>
CON	Local/HURF	\$110	\$ 110				
<b>Total Programmed Funding</b>			\$ 110	\$ -	\$ -	\$ -	\$ -

## Central Yavapai Metropolitan Planning Organization 2013 - 2017 MTIP

### Local Funded Projects (FY Funding in \$1,000's)

<b>TIP ID:</b> CY-PRS-12-LP16		<b>County:</b> Yavapai	<b>Project Type:</b> Surface Transportation				
<b>Location and Sponsor:</b> Prescott / City of Prescott		<b>Project Name:</b> Prescott Lakes Parkway					
<b>Description:</b> AR-ACFC SR89 to Willow Lake Road							
<b>Mile Length:</b>							
<b>Phase</b>	<b>Funding Source</b>	<b>Total Project Cost</b>	<b>FY 2013</b>	<b>FY 2014</b>	<b>FY 2015</b>	<b>FY 2016</b>	<b>FY 2017</b>
CON	Local/HURF	\$343	\$ 343				
<b>Total Programmed Funding</b>			\$ 343	\$ -	\$ -	\$ -	\$ -
<b>TIP ID:</b> CY- - -LP		<b>County:</b> Yavapai	<b>Project Type:</b>				
<b>Location and Sponsor:</b>		<b>Project Name:</b>					
<b>Description:</b>							
<b>Mile Length:</b>							
<b>Phase</b>	<b>Funding Source</b>	<b>Total Project Cost</b>	<b>FY 2013</b>	<b>FY 2014</b>	<b>FY 2015</b>	<b>FY 2016</b>	<b>FY 2017</b>
CON		\$0					
<b>Total Programmed Funding</b>			\$ -	\$ -	\$ -	\$ -	\$ -
<b>TIP ID:</b> CY- - -LP		<b>County:</b> Yavapai	<b>Project Type:</b>				
<b>Location and Sponsor:</b>		<b>Project Name:</b>					
<b>Description:</b>							
<b>Mile Length:</b>							
<b>Phase</b>	<b>Funding Source</b>	<b>Total Project Cost</b>	<b>FY 2013</b>	<b>FY 2014</b>	<b>FY 2015</b>	<b>FY 2016</b>	<b>FY 2017</b>
CON		\$0					
<b>Total Programmed Funding</b>			\$ -	\$ -	\$ -	\$ -	\$ -
<b>TIP ID:</b> CY- - -LP		<b>County:</b> Yavapai	<b>Project Type:</b>				
<b>Location and Sponsor:</b>		<b>Project Name:</b>					
<b>Description:</b>							
<b>Mile Length:</b>							
<b>Phase</b>	<b>Funding Source</b>	<b>Total Project Cost</b>	<b>FY 2013</b>	<b>FY 2014</b>	<b>FY 2015</b>	<b>FY 2016</b>	<b>FY 2017</b>
CON		\$0					
<b>Total Programmed Funding</b>			\$ -	\$ -	\$ -	\$ -	\$ -

**GRAND TOTALS**

**\$6,144**

**\$5,210**

**\$3,828**

**\$7,750**

**\$2,000**

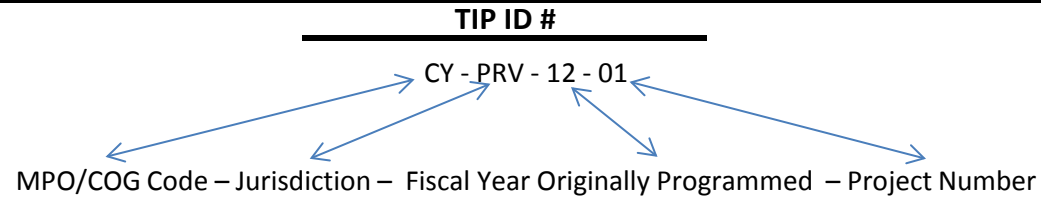
<b>Central Yavapai Metropolitan Planning Organization 2013 - 2017 MTIP</b>					
<b>STP Projects</b>					
<b>FISCAL YEAR</b>	<b>PROJECT LOCATION</b>	<b>STATUS</b>	<b>Obligation Authority</b>	<b>Programmed Amount</b>	<b>Fiscal Year Obligated</b>
<b>Historical Usage by Fiscal Year</b>					
FY03	SR 69/SR89 Intersection	Constructed	\$546.0	\$510.0	FY03
FY04-05	SR89/SR89A TI Bridge	Constructed	\$1,214.0	\$1,020.0	FY04-05
<b>FISCAL YEAR 2006/2007 (SAFETEA-LU ENACTED - OA % Lowered)</b>					
FY06	89A/Viewpoint TI	Design TI (JPA 08-1231)	\$ 642.0	\$688.7	FY10
FY07	89A/Viewpoint TI	Design TI (JPA 08-1231)	\$ 633.0	\$688.7	FY10
<b>FY 06/07 Totals</b>			<b>\$ 1,275.0</b>	<b>\$1,377.4</b>	
<b>FISCAL YEAR 2008/2009</b>					
FY08	Viewpoint TI/SR89A Spur	Construction (JPA 08-1231)	\$ 633.0	\$688.7	FY10
FY09	Viewpoint TI/SR89A Spur	Construction (JPA 08-1231)	\$ 633.0	\$688.7	FY10
<b>FY 08/09 Totals</b>			<b>\$ 1,266.0</b>	<b>\$1,377.4</b>	
<b>FISCAL YEAR 2010/2011</b>					
FY10	Pioneer Parkway	Constructed	\$ 633.0	\$633.0	FY10
FY11	Pioneer Parkway	Constructed	\$ 633.0	\$633.0	FY11
<b>FY 10/11 Totals</b>			<b>\$ 1,266.0</b>	<b>\$1,266.0</b>	
<b>FISCAL YEAR 2012/2013</b>					
FY12	Deep Well Ranch Road- S. Chino Valley	Design	\$ 633.0	\$633.0	FY12
FY13	Deep Well Ranch Road- S. Chino Valley	Design	\$ 633.0	\$633.0	Future
<b>FY 12/13 Totals</b>			<b>\$ 1,266.0</b>	<b>\$ 1,266.0</b>	
<b>FISCAL YEAR 2014/2015</b>					
FY14	Deep Well Ranch Road- S. Chino Valley	Construction	\$ 633.0	\$ 633.0	Future
FY15	JT SR89A - Deep Well Ranch Road	Construction	\$ 633.0	\$ 633.0	Future
<b>FY 14/15 Totals</b>			<b>\$ 1,266.0</b>	<b>\$ 1,266.0</b>	
<b>FISCAL YEAR 2016/2017</b>					
FY16	SR 89/Perkinsville Roundabout	Construction	\$ 633.0	\$ 633.0	Future
FY17	SR 89/Perkinsville Roundabout	Construction	\$ 633.0	\$ -	Future
<b>FY 16/17 Totals</b>			<b>\$ 1,266.0</b>	<b>\$ 633.0</b>	
<b>OA Total</b>			<b>\$9,365.0</b>		
<b>Programmed Totals</b>				<b>\$8,715.8</b>	

\*Dollar amounts are in thousands

Grey = Historical

# Central Yavapai Metropolitan Planning Organization 2013 - 2017 MTIP

## Acronym and TIP ID Key



### Jurisdiction Codes

CY	Central Yavapai MPO
CHV	Town of Chino Valley
DEW	Town of Dewey-Humboldt
PRS	City of Prescott
PRV	Town of Prescott Valley
YYV	Yavapai County
YPT	Yavapai Prescott Tribe
DOT	Arizona Department of Transportation
MPO	Central Yavapai MPO Region wide

### Funding Codes

LM	Local Match
DM	District Minor
TE	Transportation Enhancement
SRTS	Safe Routes to School
HSIP	Highway Safety Improvement Program
BIA	Bureau of Indian Affairs
STP	Surface Transportation Program
OM	Operations and Maintenance
TR	Transit
LP	Local Project